

Reducing crime in Northern Ireland - call for views



Department of
Justice

An Roinn Dlí agus Cirt

Mánnystrie O tha Laa

www.justice-ni.gov.uk

**Tell us what you think
about our ideas**

Child friendly version



Contents

Page 3	About this booklet
Page 4	What we want to achieve
Page 5	How we will work
Page 12	About you
Page 15	Your views on why people commit crimes
Page 21	Stopping people from getting involved in crime
Page 25	Stopping people from reoffending
Page 30	People who might get hurt
Page 32	Your views on what we should do
Page 34	Our vision
Page 42	Being fair to everyone
Page 45	Further comments

About this booklet

We are the Department of Justice.

We are a part of the government in Northern Ireland.

We are in charge of protecting people from crime.

We want there to be less crime in Northern Ireland.

We are writing a new plan on how to reduce crime in Northern Ireland.

We want to know what you think of our plan.

Please answer the questions in this booklet to tell us what you think.



What we want to achieve

It is important to punish people who commit crimes.

But it is better to stop crime from happening in the first place.

Our aims are what we want to achieve. We are thinking about having 2 aims:

1. Stop crime from happening in the first place.
2. Help people who have committed crimes to change.



How we will work

We are thinking about 4 ways we could work:

1. Help people who might commit crimes, so they do not break the law.
2. Make sure all of our services and projects work together.
3. Try new ways to stop crime.
4. Be open and honest about what we are doing.

We think this is important, but we want to know if you agree.



Feeling healthy and well

We want people to be healthy and well.

When people are healthy and well, they are more likely to live a good life.

People can feel unwell for many different reasons.

If we support them to feel healthy and well, we could help them to stay safe and live good lives.

Do you think helping people be healthy and well can reduce crime?



Feeling safe and included

People should feel safe and included in their local community.

To feel safe and included, people need:

- A safe place to live.
- Enough money to afford the things they need to live.

If everyone feels safe and included, this can help to stop crimes from happening.

Do you think these things help stop crime?



Learning and Jobs

We want to help people go to school, learn skills and get a job.

This can help people to stay out of trouble and have a good life.

Some people do not do well at school.

They can find it hard to get a good job and earn money. So we should try to support them.

Do you agree that education and jobs can help stop crime?



After crime has happened

We are thinking about how we should respond after crime happens. We want to:

- Help the people who are hurt by crime.
- Help people who commit crimes to change how they behave.
- Keep the public safe.

But we do not just want to put lots of people in prison.

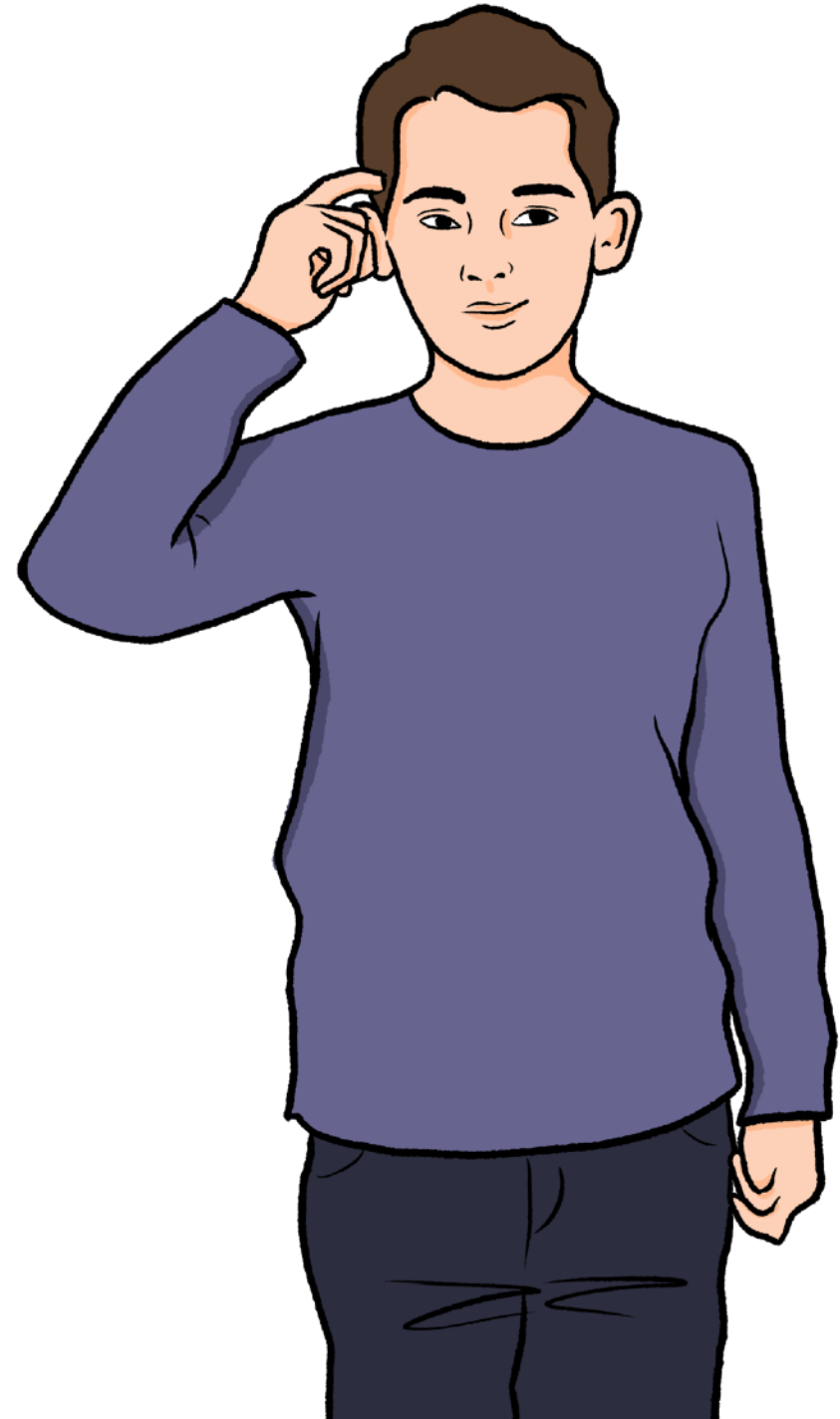
Do you think these things help stop crime?



Some things can make it more likely that people get involved in crime.

If we give people the right support, they might be less likely to commit crime again.

The next questions ask what you think about these reasons.

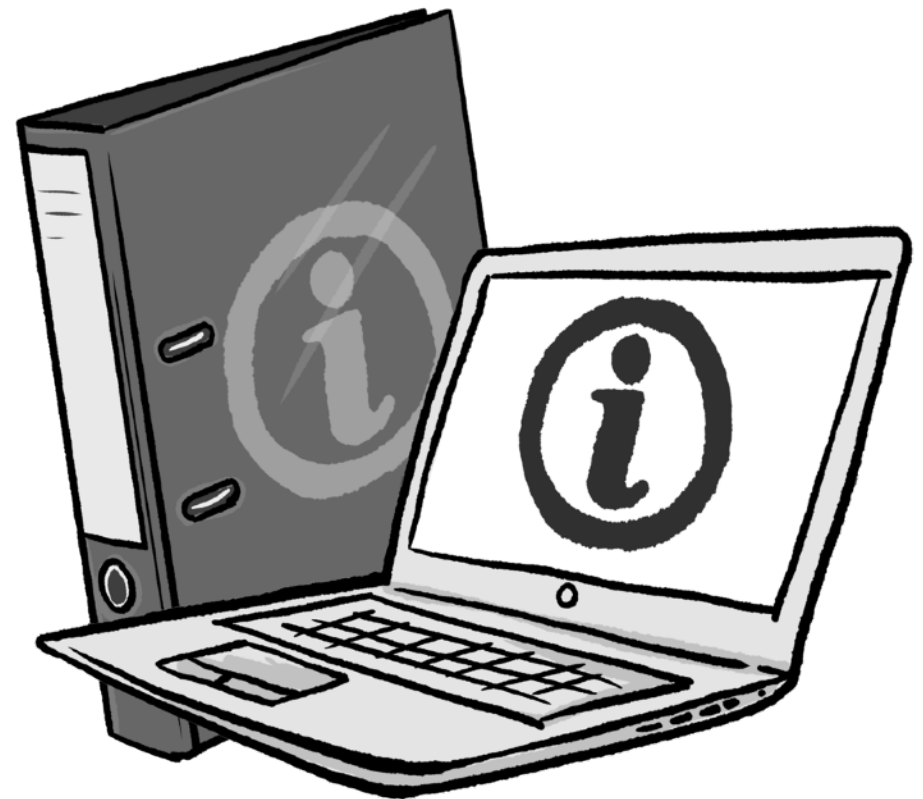


Your information

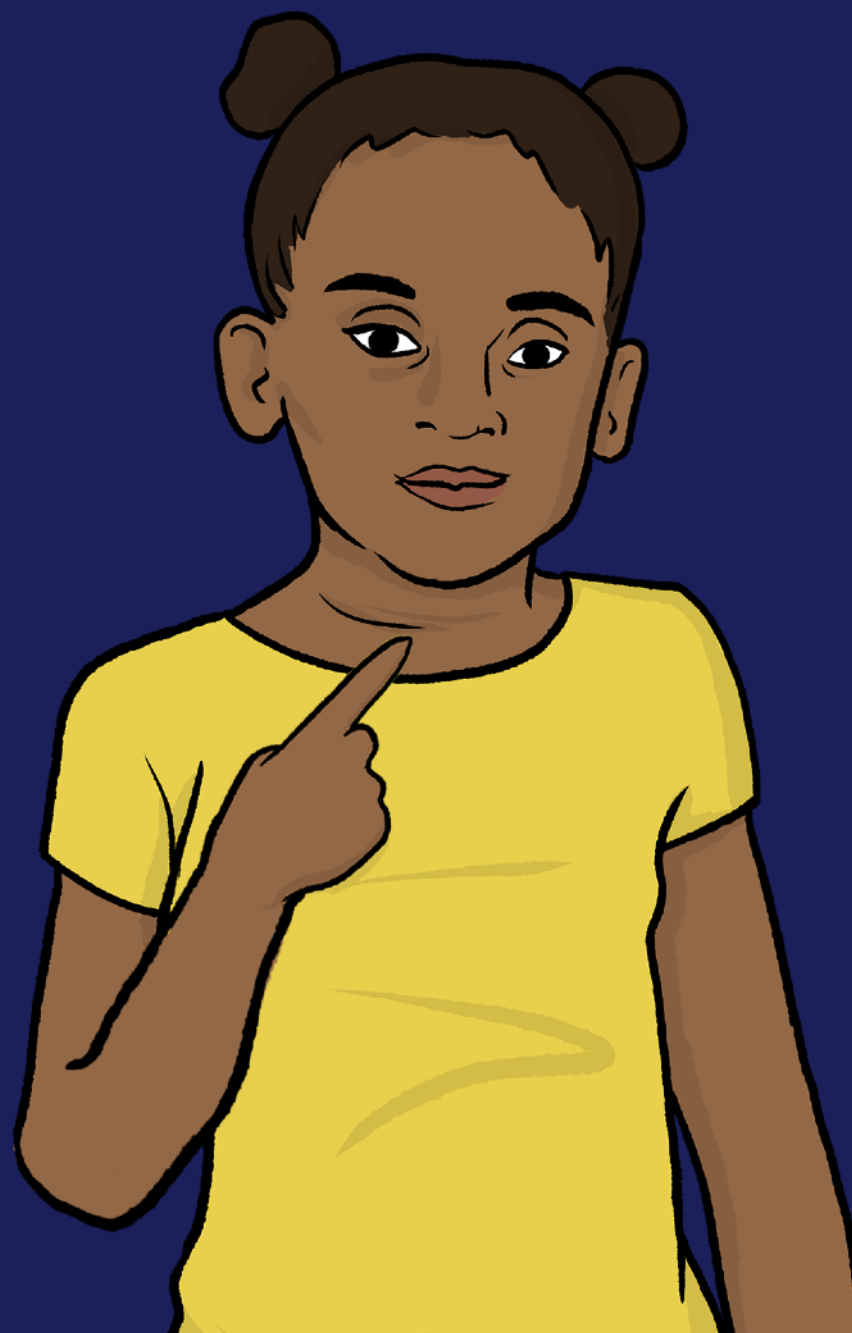
We will use your answers and the information you give us to make our plan better.

We will follow the law when we use your answers.

You can find out more about how we use your information by emailing: statistics.research@justice-ni.gov.uk



About you



Question 1: Tell us a bit about you

You can tick more than one box

I am answering for myself

I am sharing what I think as part of a group,
like a school or a youth group

I am answering with help from someone,
like a teacher or support worker

Other. Please tell us more in this box:

I have had experience of crime

I have been affected by crime

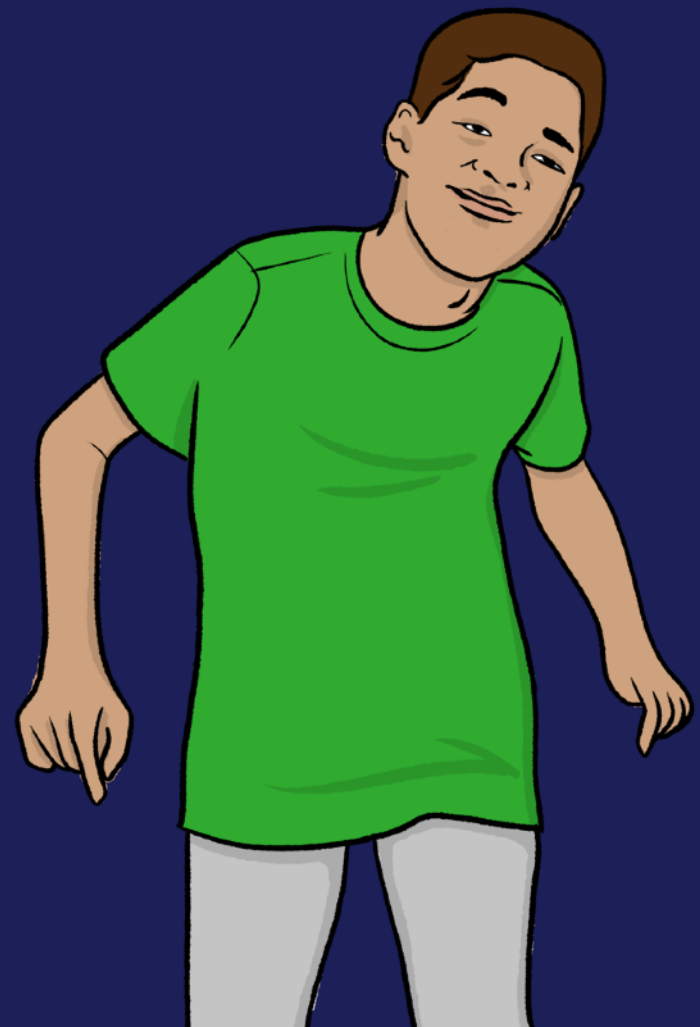
Question 2: About your group or organisation:

If you are answering for a group or an organisation, please tell us its name and email address.

Please do not write your own name or your own email address if you are answering for yourself.



Your views on why people commit crimes



Question 3a: Which of the following things do you think make people more likely to become involved in crime?

Tick all the boxes that you think are true. There are more choices on the next page.

- Health issues and mental health issues
- Not having a safe place to live
- Not doing well at school
- Not having a job or a chance to learn skills
- Bad things that happened when they were children

- Using drugs or drinking too much alcohol
- Not having enough money to pay for the things they need to live
- Being lonely and not having enough support
- People in their family or local community being involved in crime

Friends being involved in crime

Seeing people in their family hurt each other and treat each other badly

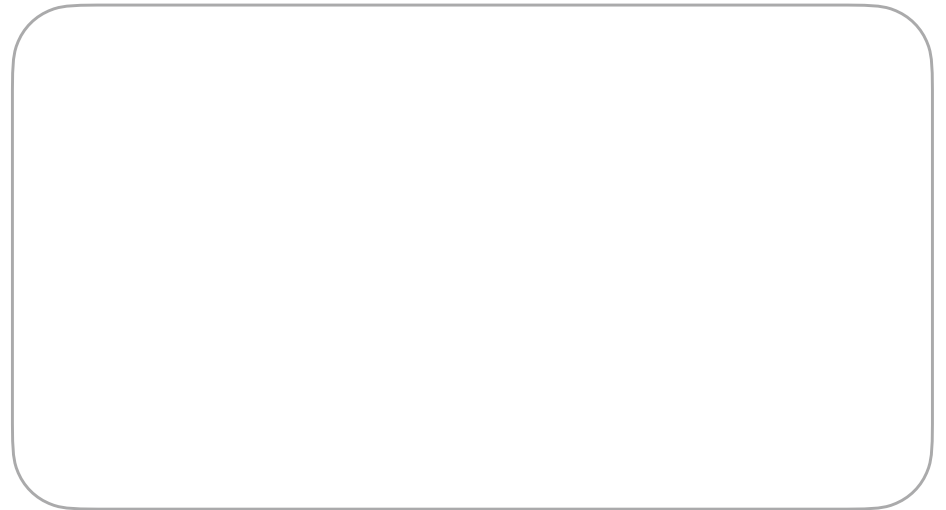
Not getting support from government and council services

Other reasons. Please write the reasons in this box:

Question 3b: Please tell us any other things that you think make people more likely to become involved in crime?



Question 3c: What do you think is the main reason why people become involved in crime?



Question 3d: Please give us examples that you know about, or are aware of, that show what leads people into crime.



When people first get involved in crime, we call it **first-time offending**.

When people commit crimes again, we call it **reoffending**.

Question 4a: Do you think first-time offending happens for different reasons from reoffending?

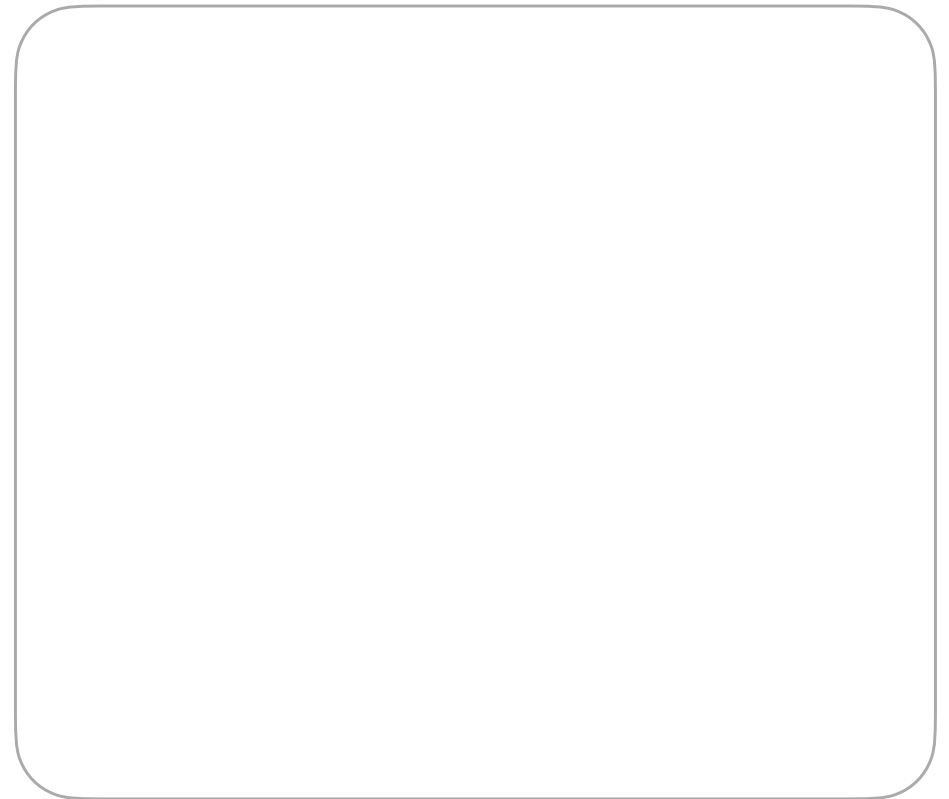
Yes

No

I do not know

Question 4b: Please tell us why you think this.

Please use examples that you know about, or are aware of, to explain your answer.



Stopping people from getting involved in crime



Question 5a: What are the best ways to stop people from first-time offending?

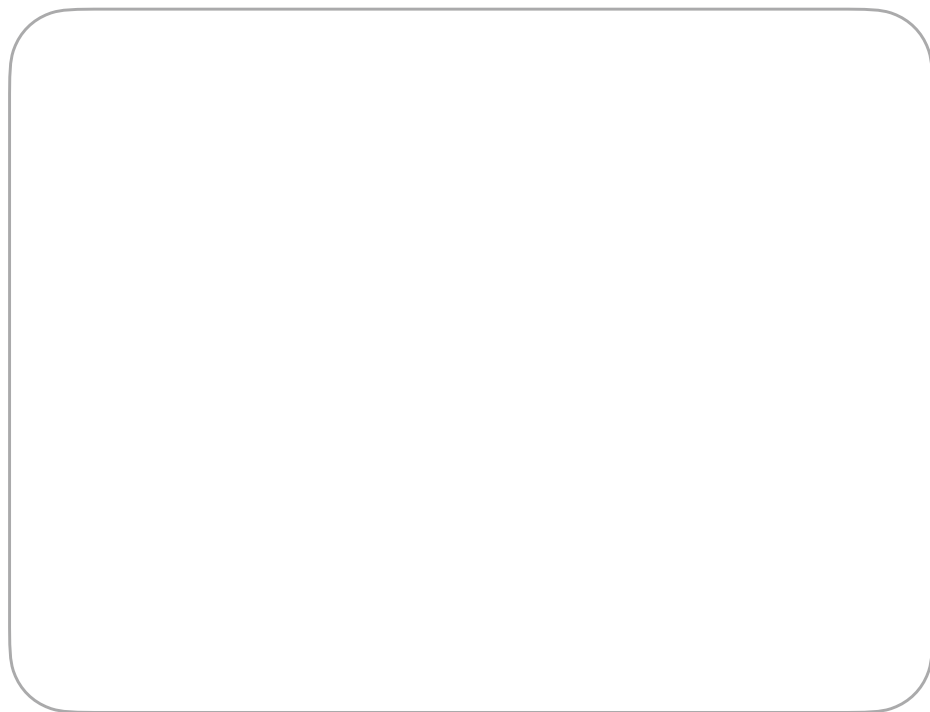
Tick all the boxes that you think are true. There are more choices on the next page.

- | | |
|--|--|
| <input type="checkbox"/> Giving people safe homes | <input type="checkbox"/> Stopping people from being treated badly by others |
| <input type="checkbox"/> Giving people support for their mental health | <input type="checkbox"/> Finding out if people need extra support at school |
| <input type="checkbox"/> Giving people support to stop using drugs | <input type="checkbox"/> Dealing with adults who break the law without sending them to court |
| <input type="checkbox"/> Giving people a chance to learn and get a job | <input type="checkbox"/> Working with people when they are still aged under 18 |
| <input type="checkbox"/> Knowing people who can help them to make good choices | |

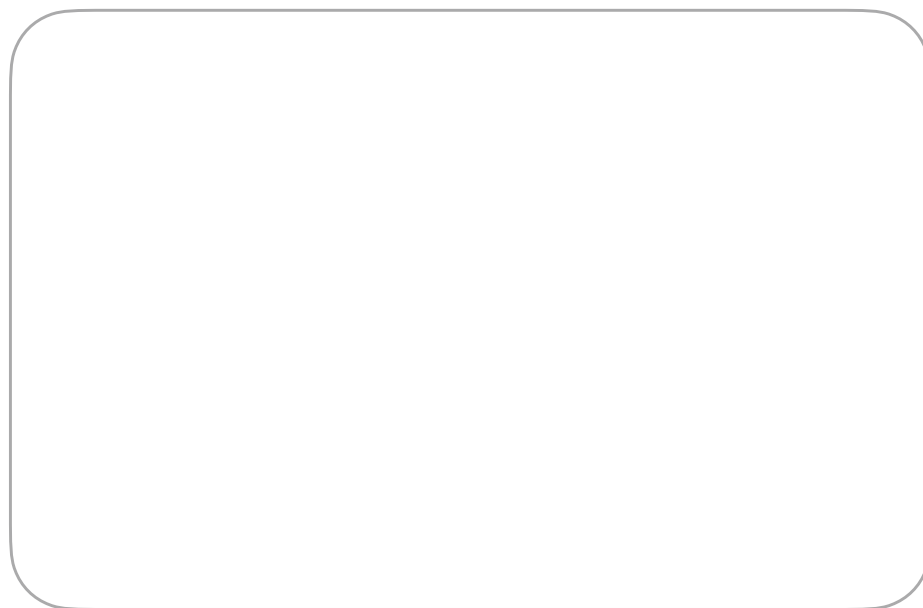
- Giving help to children's families
- Giving people support in school
- Giving people chances to learn and work after they leave school
- Taking part in local projects for young people
- Other ways. Please write your answer in the box:



Question 5b: Please tell us any other things that help to stop people getting involved in crime:



Question 5c: Please give us examples that you know about, or are aware of, that show what stops people from getting involved in crime:



Stopping people from reoffending



Remember, **reoffending** means someone committing crimes again.

Question 6a: Which types of support do you think help to stop people from reoffending?

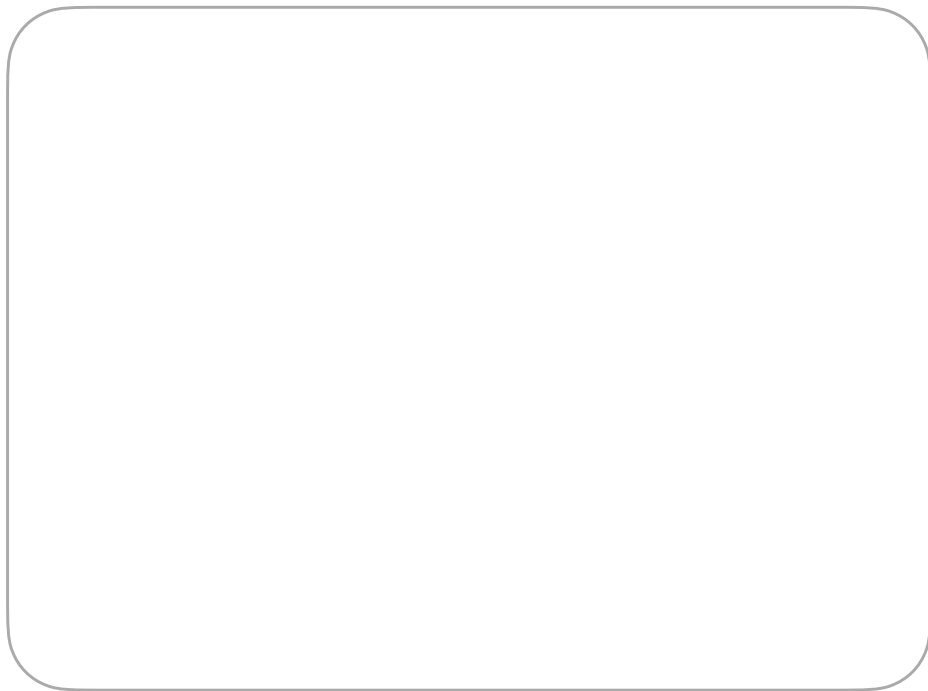
Tick all the boxes that you think are true. There are more choices on the next page.

- | | | | |
|--------------------------|--|--------------------------|--|
| <input type="checkbox"/> | Support with their health and mental health | <input type="checkbox"/> | Dealing with adults without sending them to prison |
| <input type="checkbox"/> | Help to stop using drugs | <input type="checkbox"/> | Checking on people to make sure they are following the law |
| <input type="checkbox"/> | A safe place to live | <input type="checkbox"/> | Projects that help people who have committed certain types of crimes |
| <input type="checkbox"/> | Support to learn new skills and get a job | <input type="checkbox"/> | Risk assessments - this means looking at how to make it less likely for things to go wrong |
| <input type="checkbox"/> | Support for their families | | |
| <input type="checkbox"/> | Dealing with young people without sending them to prison | | |

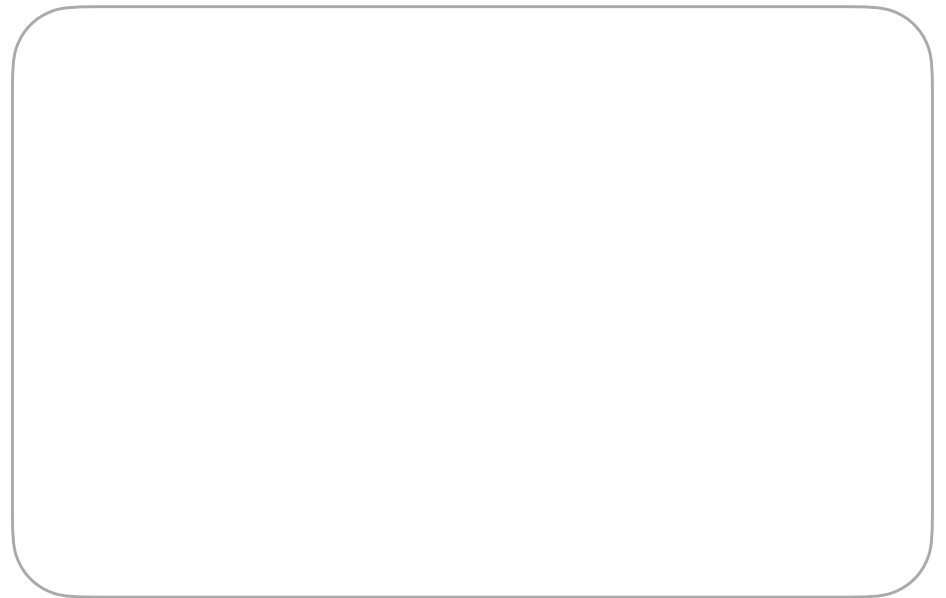
- Learning about the people who have been hurt by their crimes
- Support when leaving police stations or prisons
- Support that is right for them, if they have a disability
- Other types of support. Please write the support in this box:



Question 6b: Please tell us any other things that help to stop people from reoffending:



Question 6c: Please give us examples that you know about, or are aware of, that show what stops people from reoffending:



Question 7a: Are there any groups that you think need extra support to stop them from reoffending?

Yes

No

I do not know

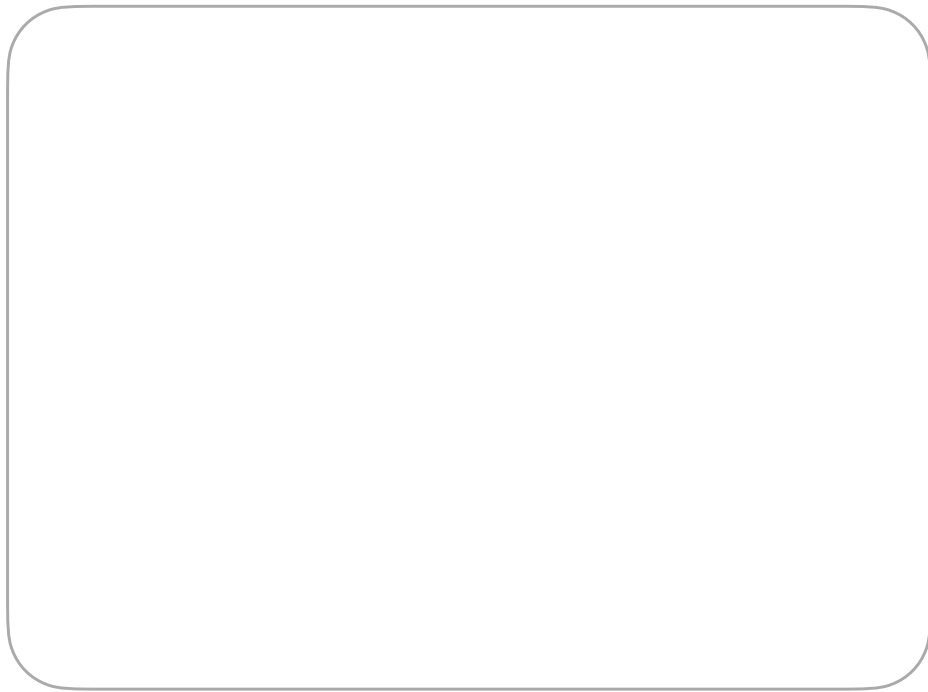
Question 7b: If you said yes, please tell us which groups and why they need extra support.

Please give us examples that you know about, or are aware of, when you answer this.

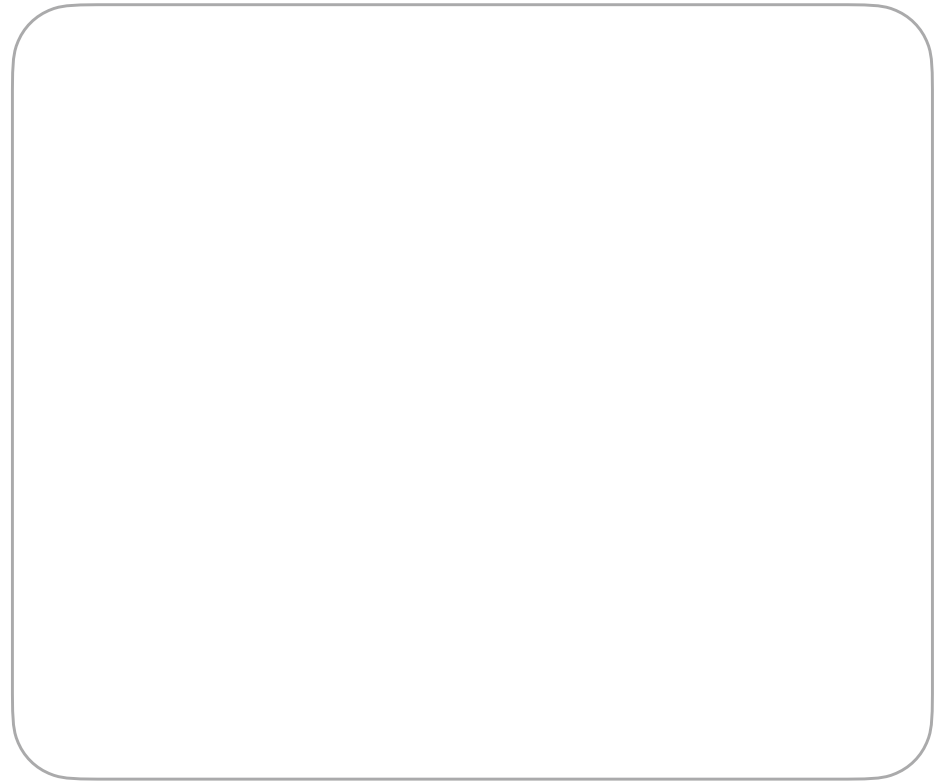
People who might get hurt



Question 8a: How do you think we can make it less likely that people get hurt by crime?



Question 8b: Please give us examples that explain your answer to Question 8a:

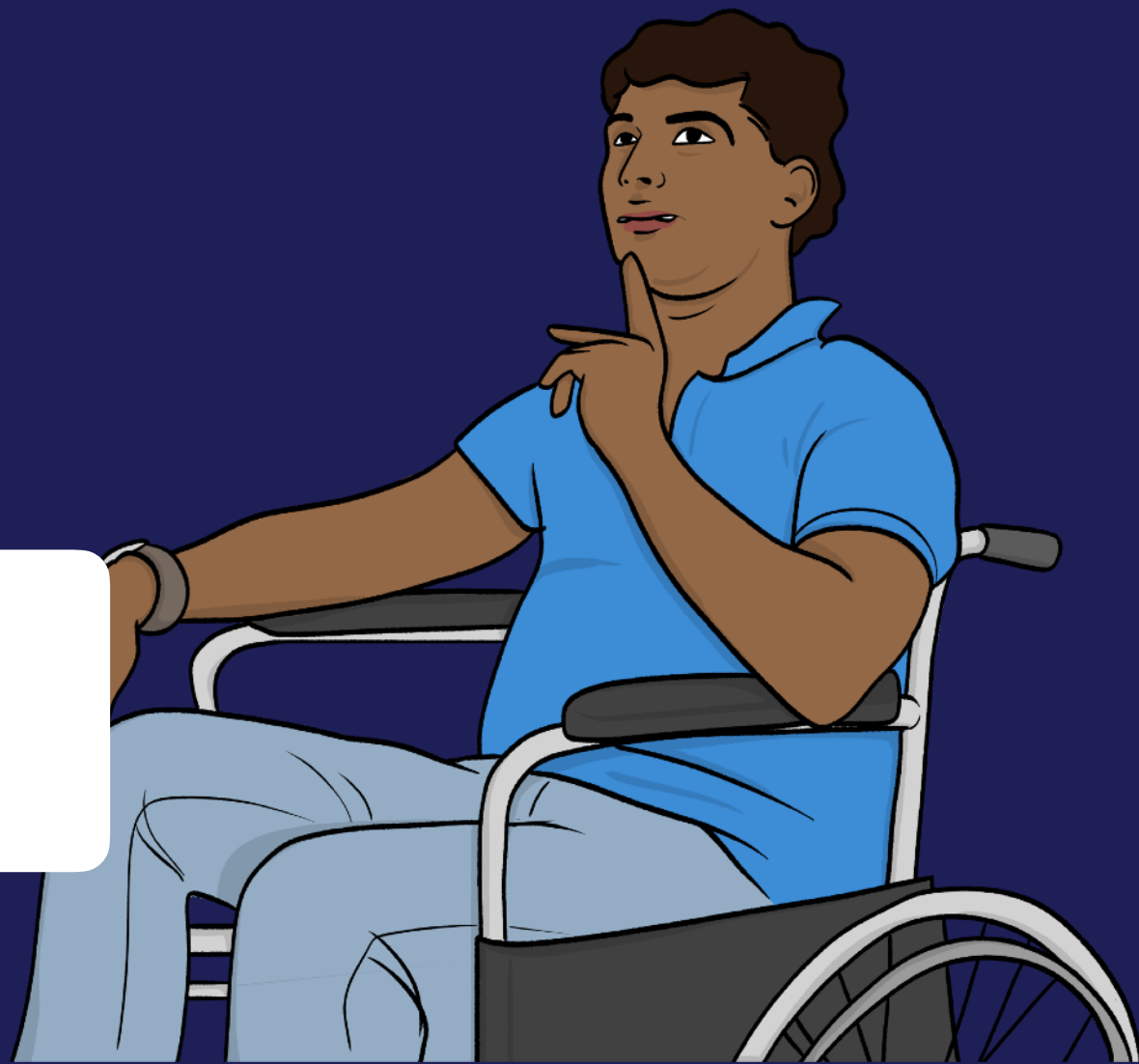


Your views on what we should do

Page

4

On page 4, we mentioned the aims we are thinking about.



Question 9a: Do you agree with our aim to stop people from committing crimes in the first place?

Yes

No

I do not know

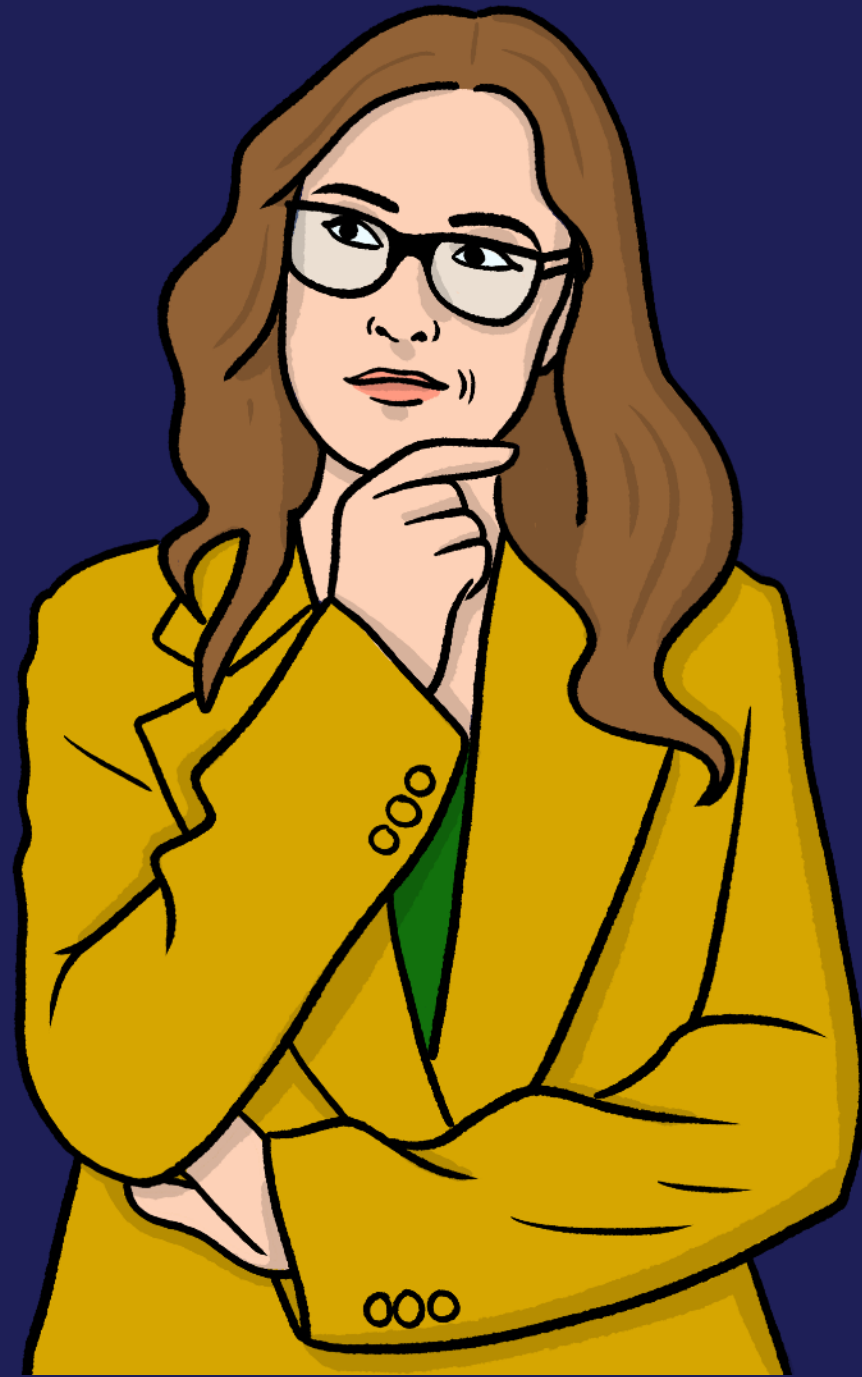
Question 9b: Do you agree with our aim to stop reoffending by supporting people to change?

Yes

No

I do not know

Our Vision



Our **vision** is what we want Northern Ireland to be like.

We want Northern Ireland to be:

- Safe and fair.
- A place where people work together to stop people from being hurt.
- A place where there is less crime and reoffending.

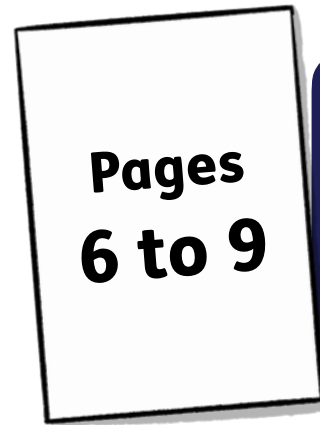


Question 9c: Do you agree with our vision?

Yes

No

I do not know



From page 6 to page 9, we talked about the main things we will work on.

Question 9d: Do you agree that we should work on these things?

Yes

No

I do not know

Question 9e: Please tell us any other thoughts you have about our plan:

A large, empty rounded rectangular box with a thin grey border, intended for the user to write their response to the question above.

Question 10a: What should we try to achieve when we work on our plan?

There are more choices on the next page.

- Less first-time offending
- Less reoffending
- Fewer victims of crime
- More support for families
- More people who are healthy and well
- Better support for **neurodiverse** people

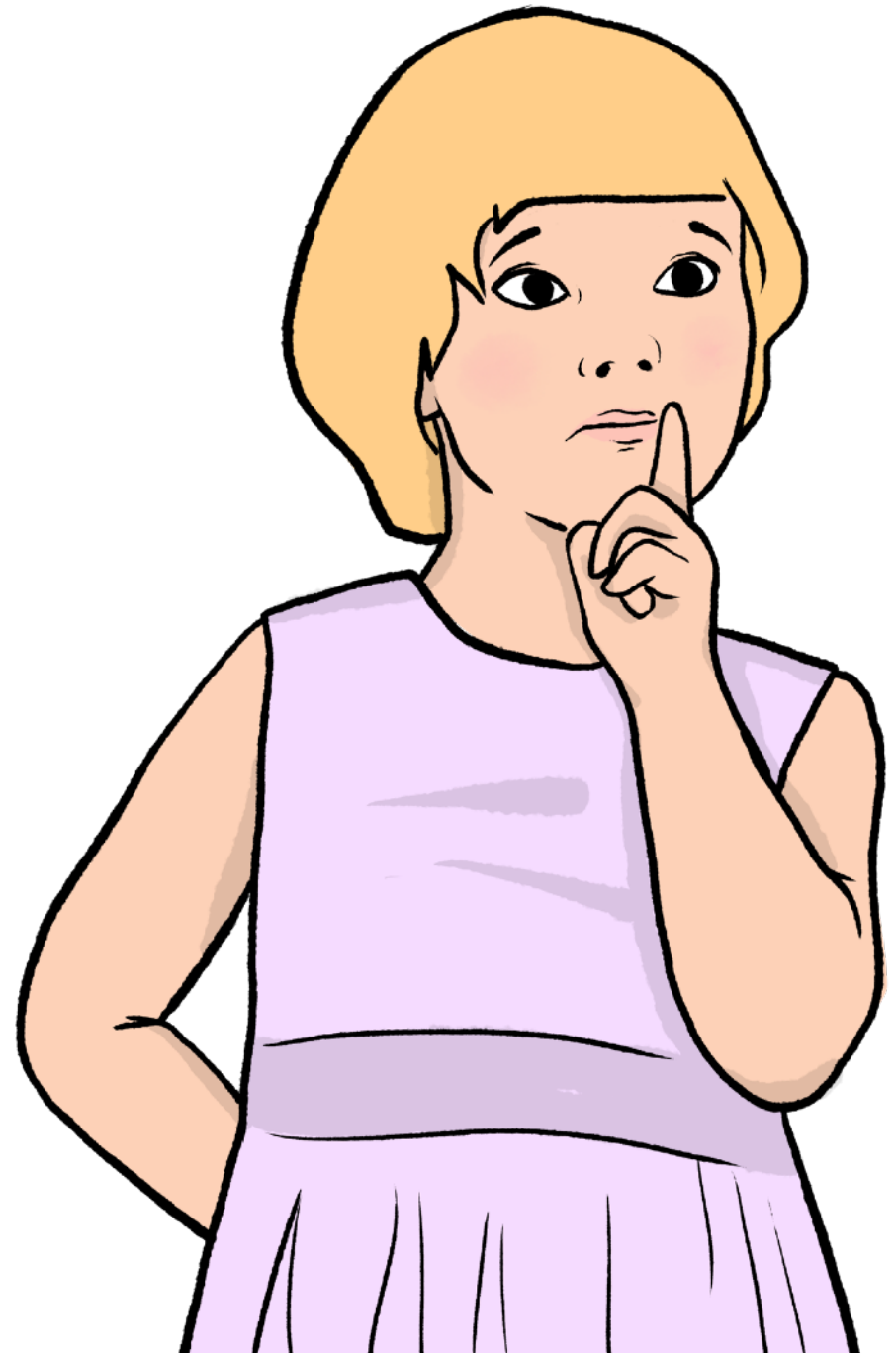
Neurodiverse means that you think and see the world in a different way from most people.

You might have a condition like ADHD or autism.

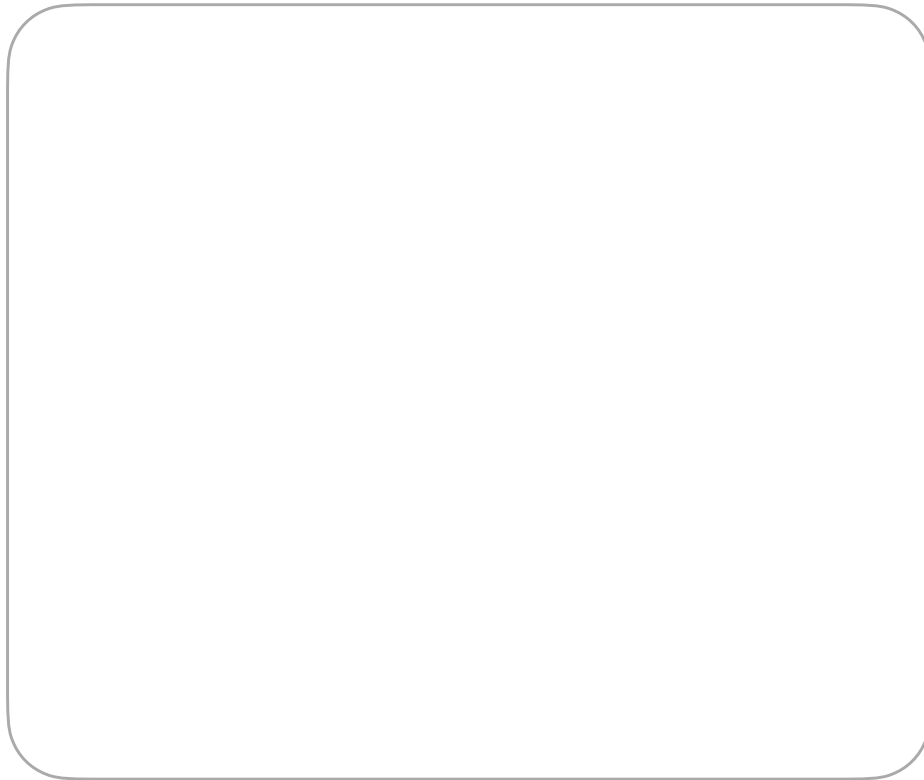
- People who do better in school and at jobs
- People who do better in school and at jobs
- Local people who get on well together

More support for our work from the public

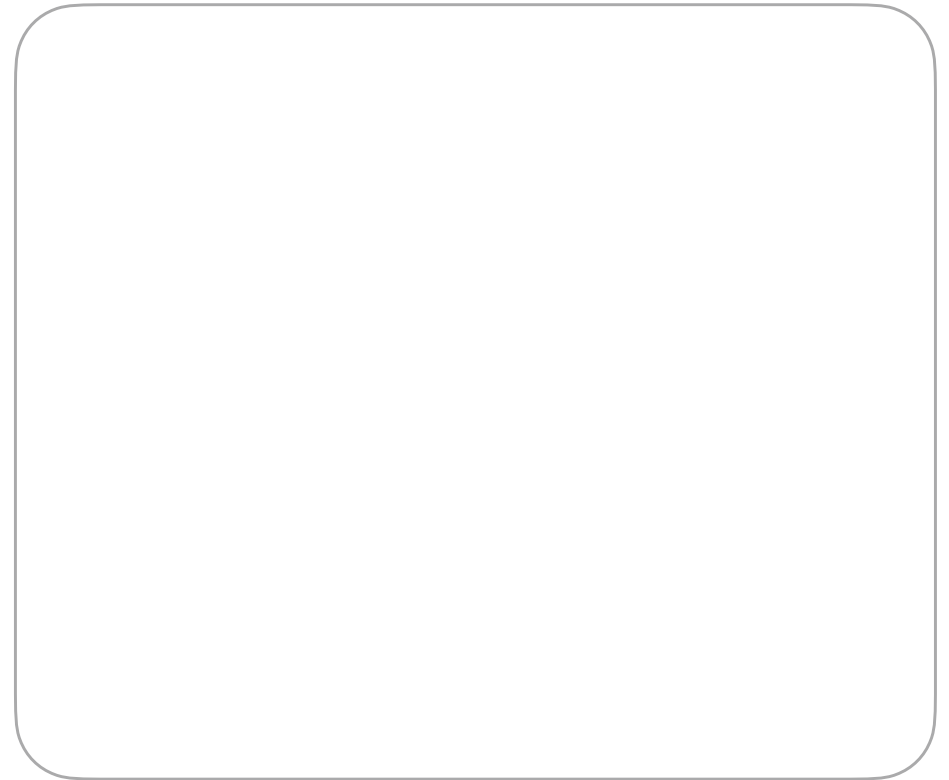
Something else. Please say what in this box:



Question 10b: Are there any other aims that we should include in our plan?



Question 10c: How should we check that we are achieving our aims?



Question 11: How can we work better with local groups to help there be less crime?

A large, empty rounded rectangular box with a thin grey border, intended for the user to write their answer to the question above.

Being fair to everyone



We must be fair to **Section 75 groups** and people who live in the countryside.

Section 75 groups are:

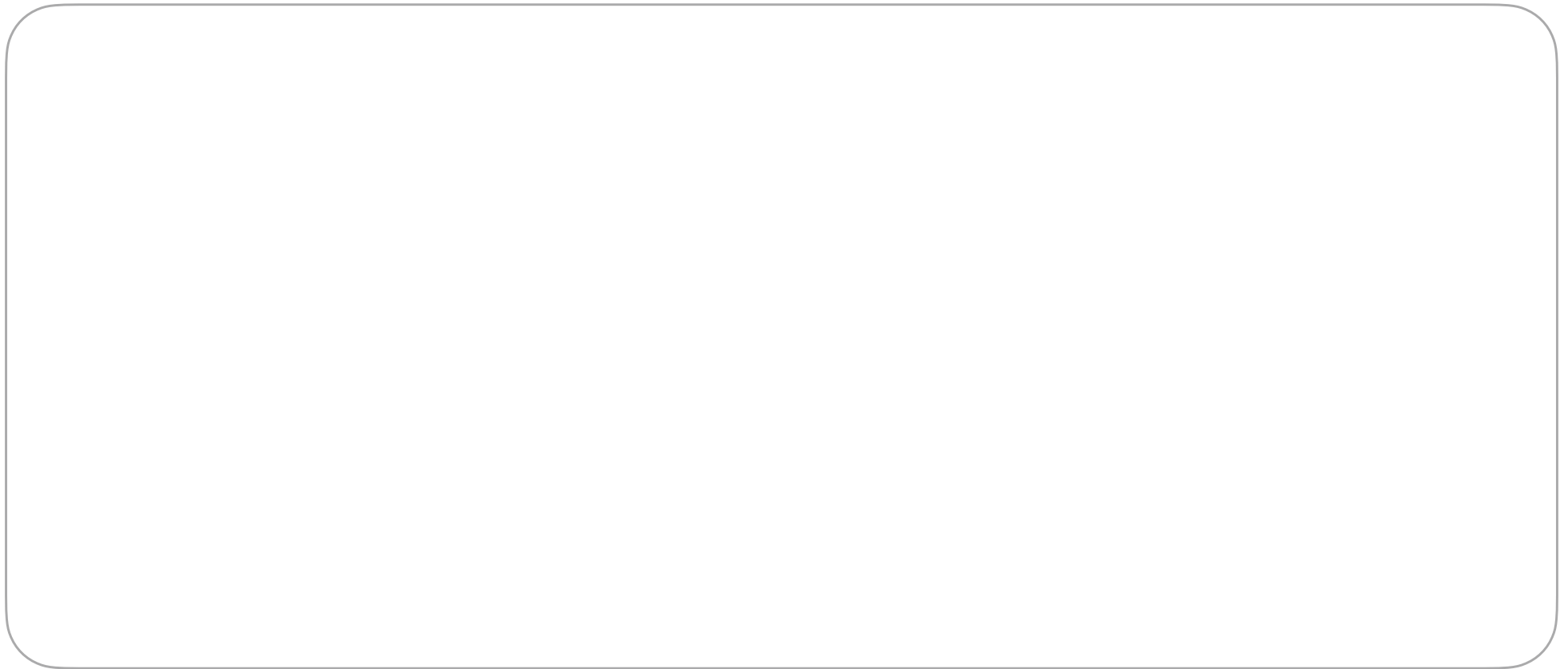
- People who believe in different religions.
- People who believe in different politics.
- People of different races.
- Men and women.
- People of different ages.
- People who are married or not married.
- People of different **sexual orientations**.

Sexual orientation means who you are attracted to.
For example, men, women or both.

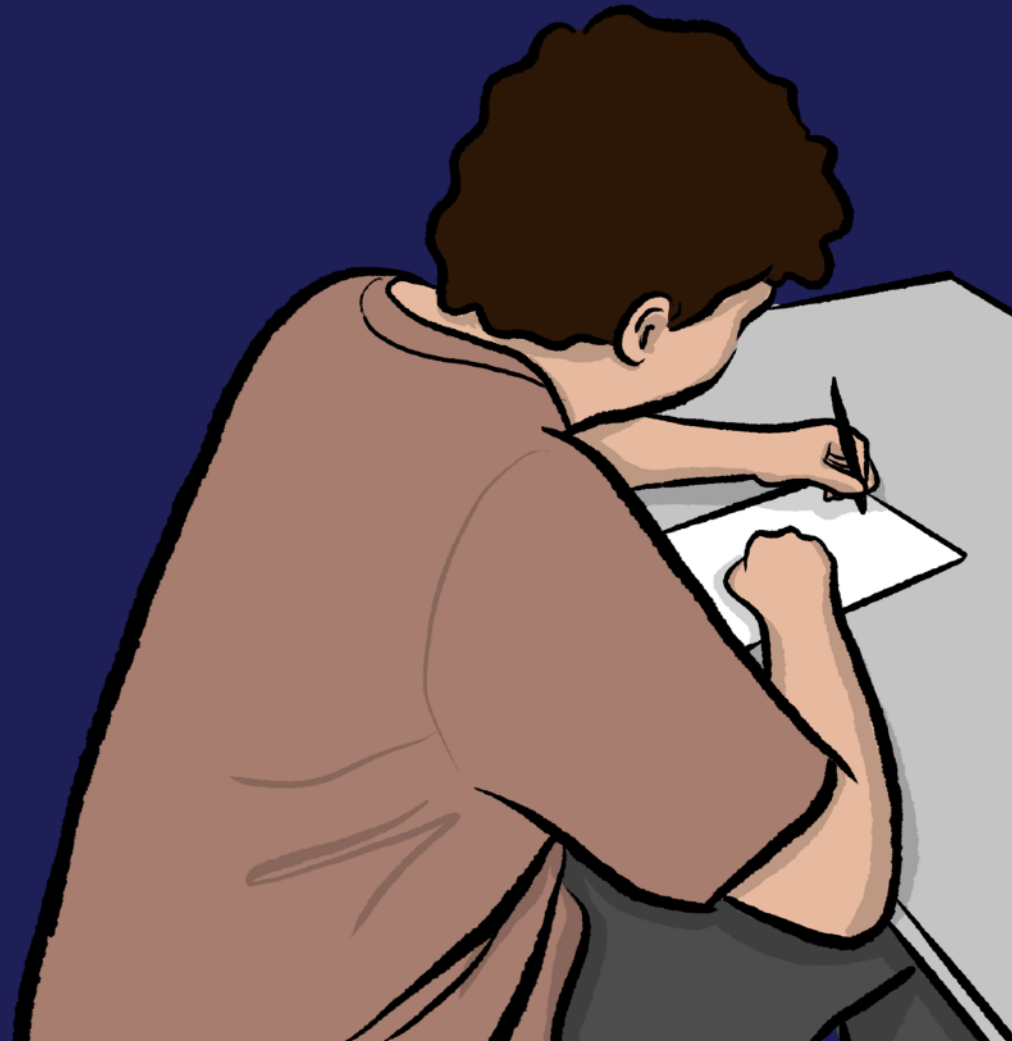
- People with or without a disability.
- People who care for others.



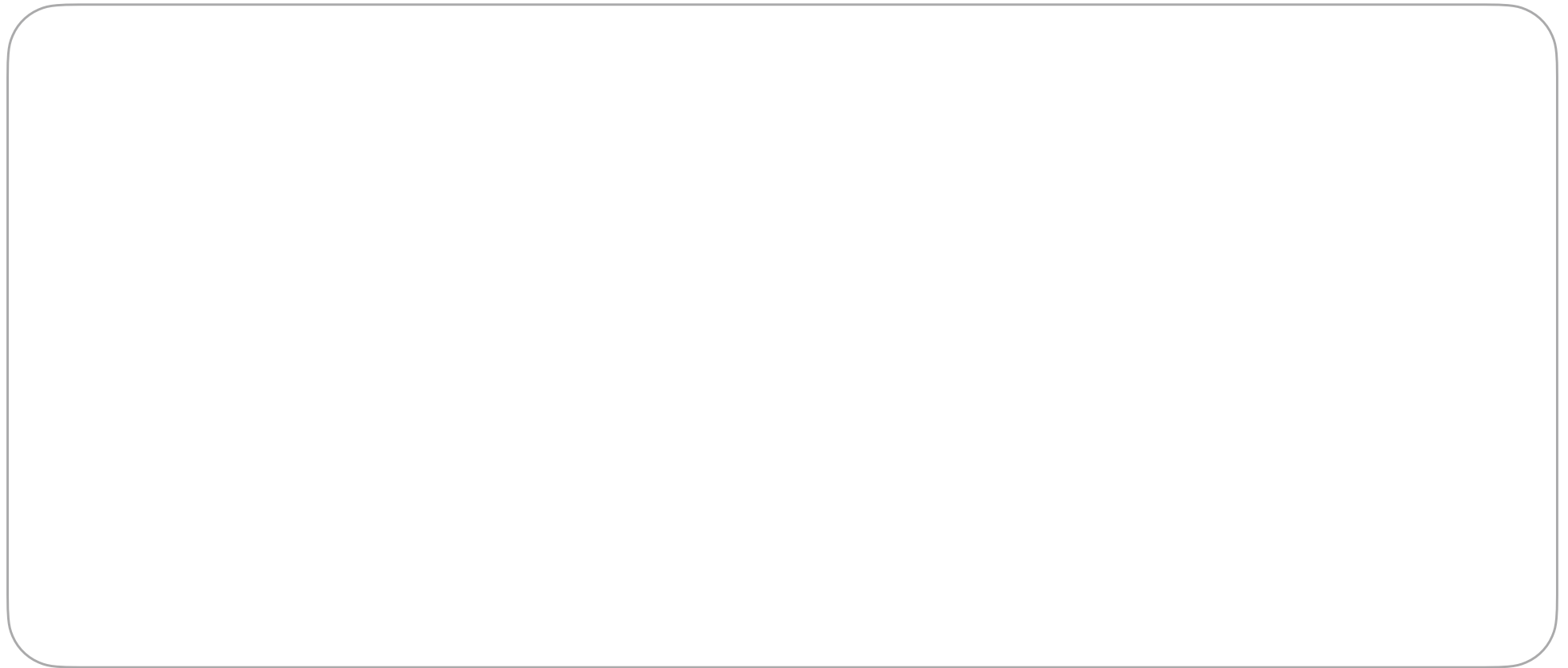
Question 12: How can we make sure we are fair to Section 75 groups?



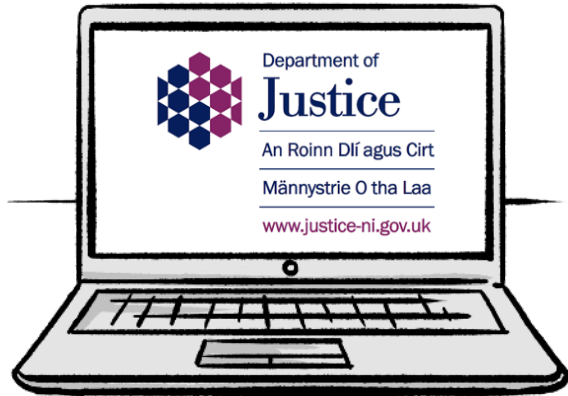
Further comments



Question 13: Is there anything else you would like to tell us to help us write our plan?

A large, empty rounded rectangular box with a thin grey border, intended for the user to write their response to the question above.

Find out more



You can look at our website here:
www.justice-ni.gov.uk

Child friendly version This booklet has been produced by easy-read-online.co.uk